

Installing Cleverscope on Vista

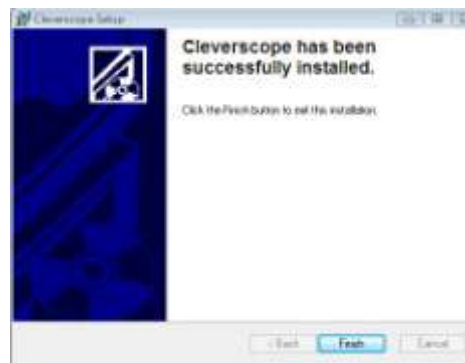
Thanks very much for your interest in Cleverscope! Please follow these instructions to install Cleverscope:

Run setup.exe on the CD that was supplied with the Cleverscope.



At various points a User Account Control similar to the one shown here will open and you will need to click on Continue to proceed.

Follow the prompts, and Cleverscope should be installed. On completion, leave the CD in the CD drive.



Connect up the acquisition unit - you'll need to plug in the power adaptor, and the USB cable to a spare port.



The PC should discover the USB connection and display 'Cleverscope CS328 MSO' or similar as in the dialog box.

Click on "Locate and Install driver software"

Wait after this for Windows to load the driver request dialog.

(It might take some seconds as some installations go looking on the internet for a driver). Once the dialog comes up, choose to find the driver automatically.



If you have removed the disk you will get a box come up asking you to insert it again.

After some searching Windows will find the driver on the CD and install it.



It will warn you that it is not digitally signed. Click on “Install this driver software anyway” - we are still waiting for the digital certificate, and no harm will come to your machine.

After some more work Windows should announce that the hardware is installed.

To begin, click on Start, All Programs, Cleverscope, Cleverscope (You can drag it to the desktop if desired).

Click on 'Auto' in the Cleverscope Control Panel, and the graph should become live.

Exit Cleverscope (File/Exit) or close button.

Now follow the section 'Using the CS328 acquisition unit', page 18 of the manual to set up the probes.

If you wish to look at the examples provided on the CD you will need to transfer them to your hard drive and then uncheck the Read-only attribute in properties.

Any problems, please email info@cleverscope.com

We would very much appreciate it if you would subscribe to occasional emails from us about updates, new products and tours, by entering your email address on the lower right hand side of our home page at <http://www.cleverscope.com/>.

You may wish to register any suggestions on the forum at <http://www.cleverscope.com/forum/>